



Total Solution Provider in Saw Device

SL13007AV

130.9 MHz IF SAW Filter
7.65 MHz Bandwidth
Revision 1: 29. Oct. 2007



-
- Electrical Characteristics
 - Package Dimensions
 - Testing Environment
 - Frequency Characteristics
-

SAWNICS Inc.

460 Cheonheung-ri, Seonggeo-eup, Cheonan-si, Chungcheongnam-do, 330-836 / Korea.
Tel: +82 41 550 9372 / Fax: +82 41 550 9399 / www.sawnics.com

□ Electrical Characteristics

Maximum Ratings

Parameters Description	Unit	Minimum	Typical	Maximum
Operation Temperature Range	°C	-20	-	70
Storage Temperature Range	°C	-40	-	80
Maximum DC Voltage	V	-	-	10
Maximum Input Power	dBm	-	-	10
Source Impedance (single ended) ⁽¹⁾	Ω	-	50	-
Load Impedance (single ended) ⁽¹⁾	Ω	-	50	-
Package type & size	V			
Length x Width	mm ²	-	13.3 x 6.5	-
Height	mm	-	-	1.8

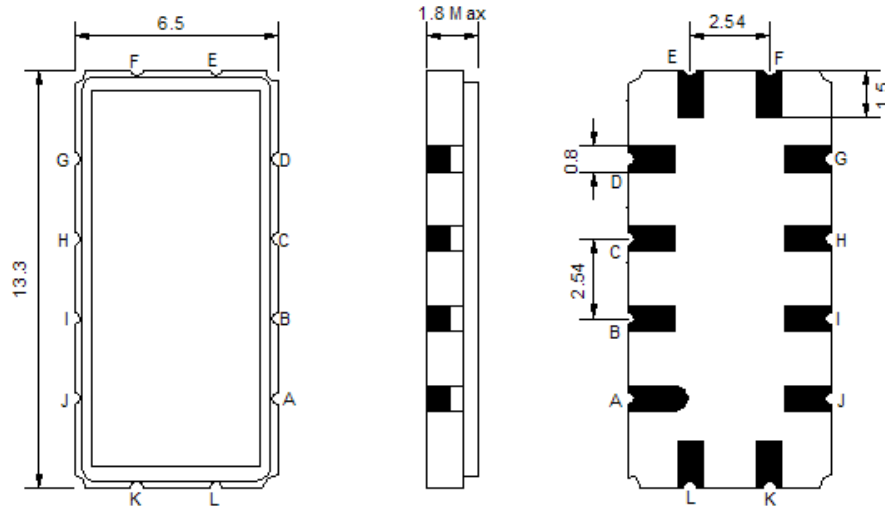
Electrical Specification

Parameters Description	Unit	Minimum	Typical	Maximum
Center Frequency (Fo)	MHz	-	130.9	-
Insertion Loss at Fo	dB	-	16.7	20.0
Amplitude Ripple Variation	dB _{p-p}	-	0.4	0.8
Group Delay Variation at Fo ± 3.5 MHz	nsec	-	40	80
Absolute Delay at Fo	µsec	-	0.85	-
Temperature Coefficient	ppm/°C	-	-23	-
Bandwidth at -1.0 dB	MHz	7.4	7.65	-
Bandwidth at -3.0 dB	MHz	8.2	8.45	-
Bandwidth at -40.0 dB	MHz	-	11.95	12.5
Relative Attenuation				
Lower Sidelobe	dB	43	48	-
Upper Sidelobe	dB	43	48	-

Notes : (1) With Matching Network (Ref. Testing Environment Circuit as shown below).

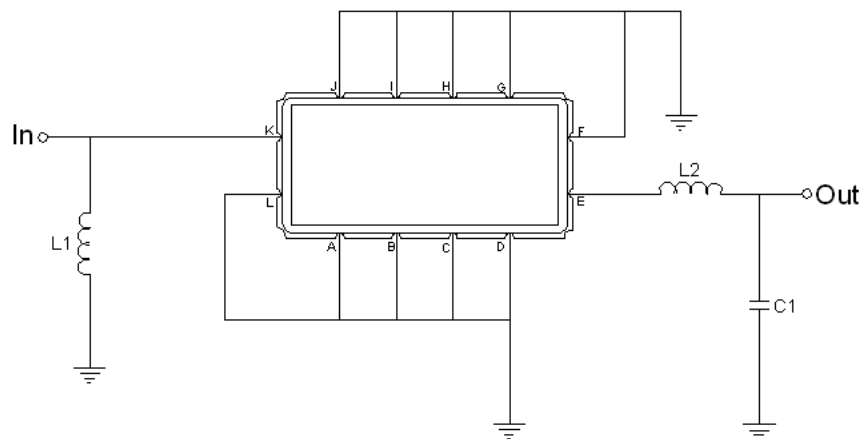
Those impedances could be modified with different impedance values and/or structures, if necessary.

Package Dimensions



Pin Description	
A, B, C, D, F, G, H, I, J, L	Ground
K	Input
E	Output

Testing Environment



Test Fixture & Values	
Input	L1=39 nH ,
Output	L2=100 nH , C2=20 pF
Source/Load Impedance	50 Ω

□ Frequency Characteristics

Frequency Response

